

# SPRING HOUSE 3



Straus Park, Brevard  
Call Fisher Realty (828) 883-9895

## **Features and Facts**

- ❖ Sidewalks & walking paths within community
- ❖ Minutes from downtown
- ❖ Platt Architecture design
- ❖ Open floor plan
- ❖ Hardwood/slate flooring throughout main level
- ❖ Stone fireplace
- ❖ Energy Star Certified
- ❖ Energy Recovery Ventilation system
- ❖ 2 Furnace/HVAC units
- ❖ All public utilities
- ❖ Energy efficient windows (Low e/Argon filled)
- ❖ Custom oak entry door
- ❖ Natural cypress paneling throughout main level
- ❖ Master bedroom on main level

- ❖ Master walk-in closet
- ❖ Upgraded cabinetry
- ❖ Stainless steel appliances
- ❖ Farm sink
- ❖ Granite countertops
- ❖ Lower level kitchenette
- ❖ Lower level recreation room
- ❖ Custom iron handrails (interior & exterior)
- ❖ Poured concrete foundation
- ❖ Poplar bark/cedar shake siding
- ❖ 40 year architectural shingle
- ❖ Outdoor fireplace
- ❖ Screened porch
- ❖ IPE decking

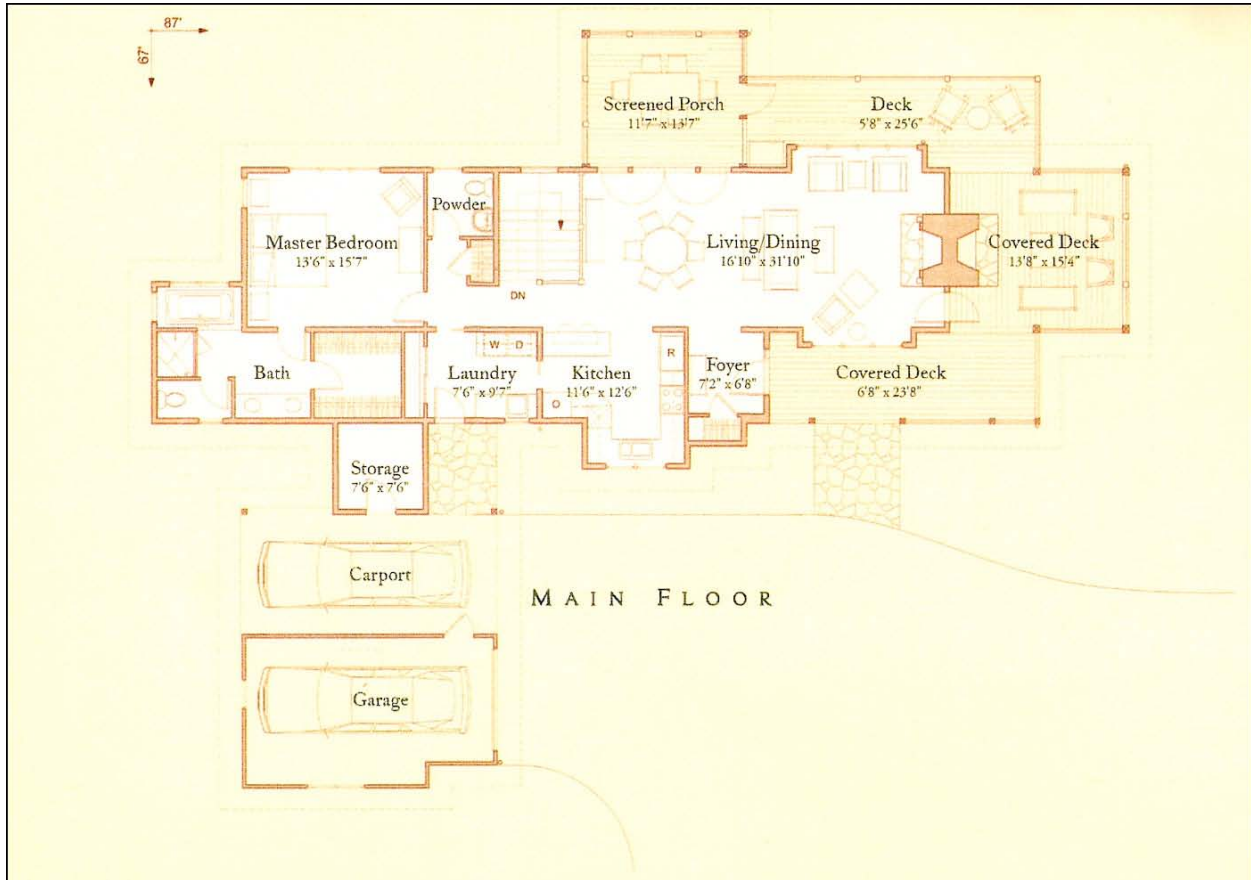
## **Straus Park Amenities**

- ❖ Lake Straus
- ❖ The Lake House Community Center
- ❖ Swimming Pool
- ❖ Tennis Courts
- ❖ Tree lined walking paths
- ❖ Green spaces
- ❖ Proximity to:
  - ❖ Downtown
  - ❖ Hospital
  - ❖ Asheville Airport

## **Costs**

- ❖ Asking price: \$695,950
- ❖ Property taxes: \$5,230
- ❖ Utilities: \$150/month
- ❖ Owner financing available
- ❖ Will consider trading for other properties

# Floor plan



## MAIN FLOOR

### MAIN FLOOR SQ. FOOTAGE

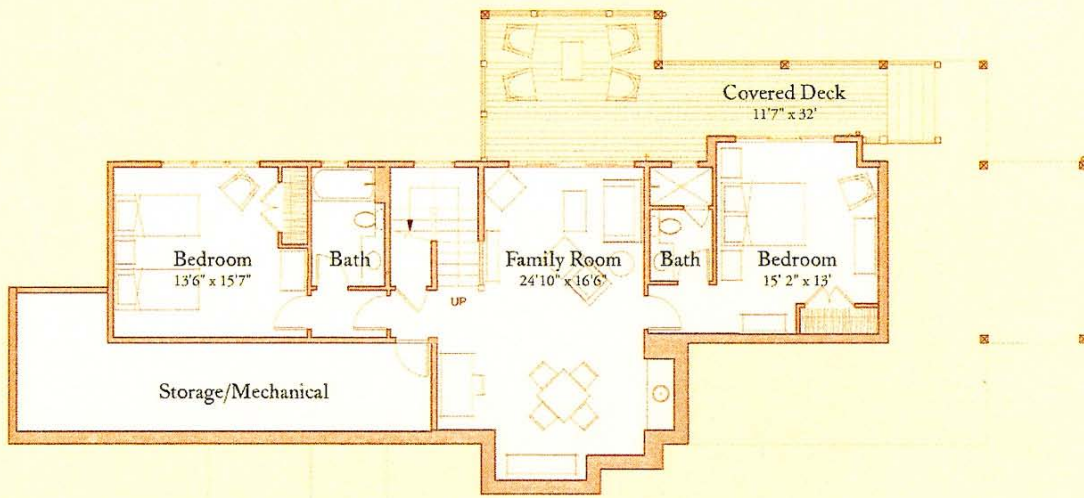
Heated Enclosed Space.....	1461
Covered Porches.....	583
Open Deck.....	185
Storage.....	68
Garage/Carport.....	533

### LOWER FLOOR

Heated Enclosed Space.....	1062
Covered Porch.....	290
Storage.....	308

### SQ. FOOTAGE TOTALS

Heated Enclosed Spaces.....	2520
Covered Porches.....	873
Open Decks.....	185
Storage.....	375



## LOWER FLOOR

*Location Map*

